

# PLAT OF WINGED FOOT COTTAGES

BEING A TRACT OF LAND LYING IN SECTION 31, TOWNSHIP 38 SOUTH, RANGE 42 EAST MARTIN COUNTY, FLORIDA

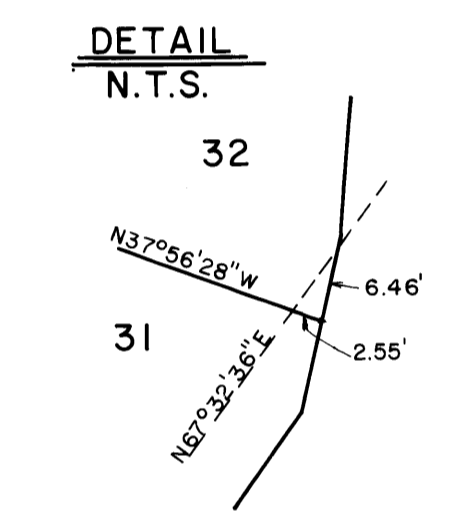
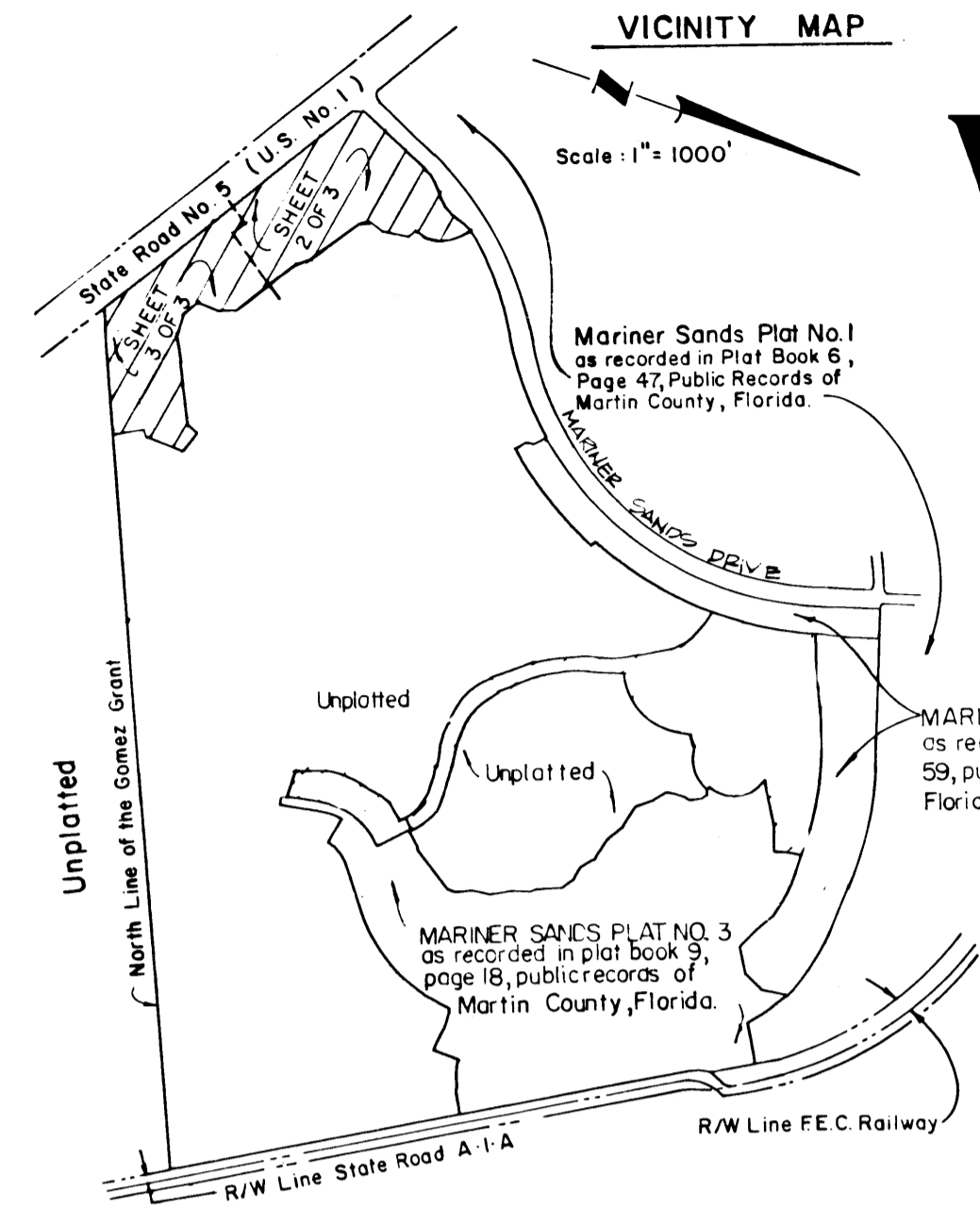
I, Louise v. Isaacs, Clerk of the Circuit Court of Martin County, Florida, hereby certify that this plat was filed for record in Plat Book 92, Page 92, Martin County, Florida, public records, this day of 9, 1985.

LOUISE V. ISAACS, CLERK  
CIRCUIT COURT  
MARTIN COUNTY, FLORIDA

BY: \_\_\_\_\_  
Deputy Clerk

File No. \_\_\_\_\_

SHEET 3 OF 3 SHEETS  
**Hutcheon Engineers**  
CIVIL ENGINEERS & SURVEYORS  
WEST PALM BEACH  
BELLE GLADE STUART  
October, 1984



- NOTES
- 1.) All return radii 25'
  - 2.) Bearings shown herein are referenced to MARINER SANDS PLAT NO. 1 as recorded in Plat Book 6, Page 47, public records of Martin County, Florida.

- LEGEND
- ⊙ Denotes Permanent Reference Monument (P.R.M.)
  - Denotes Permanent Control Point (P.C.P.)
  - U.E. Denotes Utility Easement
  - M.E. Denotes Maintenance Easement
  - G.A. Denotes Green Area
  - W Denotes Water Tract
  - C.A. Denotes Common Area

NO.	DELTA	RADIUS	LENGTH	CHORD BEARING	CHORD
1.	87°10'13"	85.00'	129.32'	S14°06'37"W	117.20'
2.	69°43'31"	135.00'	164.29'	S09°35'12"W	154.34'
3.	118°28'01"	65.00'	134.40'	S65°07'05"E	111.70'
4.	57°25'16"	15.00'	15.03'	N04°35'13"E	14.41'
5.	294°50'31"	50.00'	257.30'	S56°42'09"E	53.85'
6.	57°25'16"	15.00'	15.03'	S62°00'28"W	14.41'
7.	57°25'16"	15.00'	15.03'	N02°26'05"E	14.41'
8.	294°50'31"	50.00'	257.30'	S58°05'17"E	53.85'
9.	57°25'16"	15.00'	15.03'	S58°05'17"E	14.41'
10.	73°40'56"	90.00'	115.74'	S88°00'24"E	107.93'
11.	146°44'40"	72.00'	184.40'	N65°15'44"E	137.98'
12.	90°09'25"	50.00'	78.68'	N49°02'40"E	70.81'
13.	61°22'26"	15.00'	16.07'	S35°38'35"W	15.31'

